



User Guide

My-Chron 2 PC Loader

Introduction

Congratulations on your purchase of a My-Chron 2 infrared PC Loader from AIM, the world leader in motor sport electronics. The My-Chron 2 incorporates the most advanced electronic technologies available. Full understanding of what this product offers begins with reading this user's guide.

The My-Chron 2 infrared PC Loader is a tool that allows you to download specific data to the WDRACK analysis program. In addition to lap times, the data downloaded is the wheel speed and rpm data, at a frequency of 5 or 10Hz, depending on you full setup configuration. In addition to the rpm and speed, the My-Chron 2 will also transmit the maximum temperature data for each lap.

These instructions assume you having a working knowledge of your computer, and the operating system.

Getting Started

In order to get started using your new PC Loader right away, follow these simple steps and you'll be downloading in minutes.

Install WDRACK Software

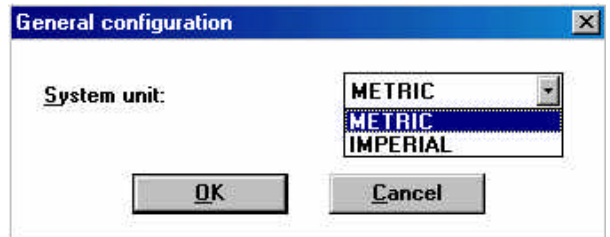
1. Insert the WDRACK installation disk into your floppy drive.
2. From Windows 95 or 98 choose Run from the Start menu. Windows 3.1 users, start file manager.
3. Assuming **A:** is your floppy drive, type:
A:\Setup
4. The installer program will start and offer a series of 3 questions.
5. First, select your language; Italian, English, German or French.
6. Next, select the loggers you will connect to; Drack only, My-Chron and Drack, or My-Chron only. If you are only using a My-Chron, select this option.
7. The last step is the directory selection. The default directory is **C:\WDRACK**. If, for any reason, you wish to have a different directory or hard disk id, you may change it now.
8. The software will install and add the **AIM-Drack** item to your Start menu under Programs.

Configuring Your Software for First Time Use

1. Your software needs some simple configuration parameters to get started.
2. Open the Drack software.
3. A splash screen will appear while the program opens. The software will open with a background picture of a Drack data logger and the script Drack across the screen. (You can also use one of your own pictures, discussed later).
4. First, select General from the Configuration menu.



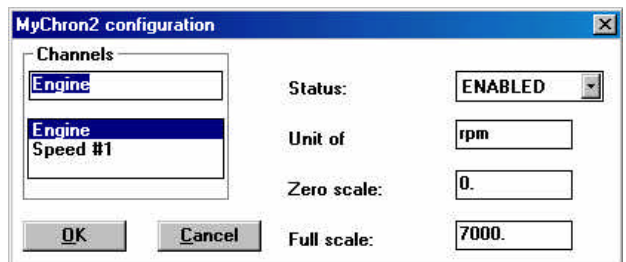
5. Select you unit of measurement, Metric or Imperial, then Click OK.



6. Next, select Serial Line from the Configuration menu and choose the serial port that the PC Loader will be connected to. This is almost always **COM1**.

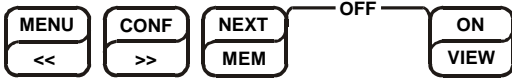


7. The last step is Input Channels from the Configuration menu. The most important item here is the channel scaling. The zero scale is the number at the bottom of a graph the full scale is the number at the top of the graph. For example, if you motor turns 13,000 rpm, you may want to set the scale at 14,000 so you can see the rpm peaks. The "Unit of" item is only a label, for example if the units are set to km/h, but you've set you System units to Imperial, it will record in MPH. To complete this step set your scaling and labels for Engine and Speed #1.

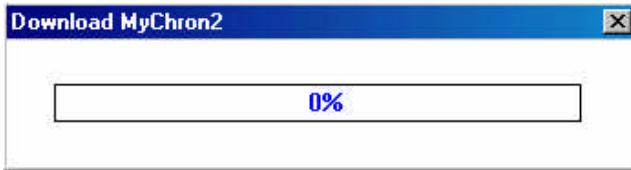


Downloading Data from the My-Chron 2

The following instructions refer to the My-Chron keyboard buttons, a copy of those buttons is below.



1. At the conclusion of a test, you are ready to download data. You may review your data from the display as normal.
2. The first step to download is to ready the computer. Place the computer near the vehicle so you may reach the display with the PC Loader.
3. Open the Drack software, and Select the Download menu.
4. The first download of the day will prompt you to select a Track, if this is a new track, click the new button and name the new track. If you have already set up a track, choose the track from the tracks listed.
5. After selecting the track, or for subsequent downloads on the same day (technically since the last computer start-up). When you select the Download menu you will see a progress bar, indicating 0%. The computer is now ready to receive data.



6. On the My-Chron, press the MENU button twice, the display will read *TRANSMIT*. Press the MEM button, the display will now read, *PRESS MEM TO CONFIRM*.
7. Before pressing MEM, place the tip of the PC Loader completely over the temperature 2 LED or TC2 as pictured.



8. With the tip of the PC Loader over the TC2 LED, press the MEM button to confirm the operation. You will then see the progress on the computer display. It is crucial to have the PC Loader covering the LED before the download starts, else incomplete errors will occur.
9. When the download is complete, the My-Chron display will flash *DONE* on the display briefly. You will be prompted to name the test and put in any additional comments for the test.
10. Name the test and put in any additional comments you desire. It is possible to add comments later if so desired, but you must name the test. We suggest you adopt a test naming format, that may, for example, include date (though the test will be date stamped by the computer), vehicle # , and type of test, such as FP for free practice, H for heat, etc.. This type of format will be useful in the future when you have many test.

Viewing Your Data

1. To view the data you've downloaded, select the Analysis menu. There you will see a list of test for a specific track. If the test you wish to analyze is not in the current track, click the Track button and select the track.
2. Select the test by either double-clicking the test or click once to highlight the test and click OK.
3. The first window to open is the data window, the test will open to your fastest lap. You may then view your data in a variety of formats, and overlay multiple laps and/or tests.
4. Further software instructions are beyond the scope of this document. However, being windows based, the software is very intuitive with pull-down menus and buttons.

Customizing Your Drack Background

You may select any Windows bitmap (.bmp) file as your Drack background. To do so, from the Drack start-up screen, select Background Image from the File menu, and select the file you wish to use via the explorer like file viewer.

North American Distributor and Service Center

AIM Sportsystems

217 N. Main Street, Lake Elsinore, CA 92530

Toll Free 1.800.718.9090 (US and Canada)

Phone (909) 674.9090

Fax (909) 674.5699

E-mail m2@aimsports.com

Web www.aimsports.com